

### Stationary Post Kits

#### 3 Post Heights

1630 mm, 1830 mm, 2140 mm



#### 3 Shelf Widths

460 mm, 540 mm, 610 mm

#### • Post Kit includes:

2 stationary posts with leveling feet installed, 1 top post connector, 1 bottom post connector, collar wedges in a bag and instructions. Post Kit ships disassembled.

### Features & Benefits

#### Strong Technology

Posts and Traverses are built using advanced manufacturing technology and the use of a non-corrosive and rust free composite material. The light-weight, yet extremely durable composite material in Camshelving® Basics Series endures even the toughest environments and supports all food safety, HACCP and sanitation recommendations. Shelves 760 to 910 mm long hold up to 300 Kg evenly distributed static weight. Shelves 1070 to 1220 mm long hold up to 250 Kg each and shelves 1380 to 1530 mm long hold up to 200 Kg each. Shelves connected by Corner Connectors hold up to 136 kg on a 760 to 1220 mm traverse.

#### Smart Design.

Similar to other shelving products by Cambro, shelf plates can be easily removed, washed individually or in sections and placed in an open-end Camrack® (OETR314) and washed in a commercial dishwasher.

#### Uncompromised Reliability.

Resistant to scratching, peeling, warping, rusting and corrosion every component in Camshelving® Basics was rigorously tested for strength, reliability and performance. Functions in temperatures down to -38° C or warm environments up to 88° C.

#### Exceptional Value.

Innovative design helps maximize valuable space and provides strength and stability. Straight line components are attached by sharing posts of existing units with no loss of weight-bearing capacity. Camshelving® Basics features a lifetime warranty against rust and corrosion eliminating the need for unnecessary replacement costs.

#### Requires Minimal Assembly.

Can be put together with the use of a rubber mallet. Two-piece dovetails secure Traverses so they can be set easily into place.

#### Flexible Design.

Shelves can be easily adjusted at 100 mm increments. Add a shelf to an existing unit by simply ordering the appropriate Shelf Kit. Adjustable foot on bottom of each stationary Post adjusts easily for floor irregularities so shelf contents are securely stored and leveled.

#### Optional Accessories.

Include Wall Fastener and Seismic Foot. Each are packed 4 per case. Identification Tags clip easily onto traverses.

Item No. \_\_\_\_\_

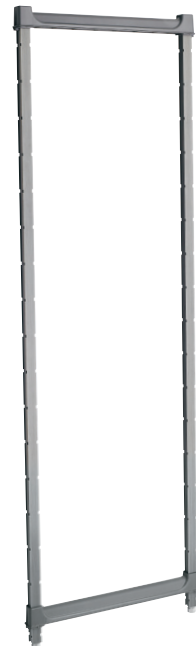
Specifier Identification No. \_\_\_\_\_

Model No. \_\_\_\_\_

Quantity \_\_\_\_\_



Four Shelf Unit built from 2 Post Kits and 4 Shelf Kits.



Post Kit includes two Posts, one set of Post Connectors, and a bag of Post Connector Collar Wedges (unassembled).

### Approvals



Does not include Wall Fastener, Seismic Foot, Corner Connector and ID Tag.

COMPONENT

Camshelving Basics Components are Patent Pending.

# Camshelving® Basics Series

## Stationary Post Kits

### 3 Post Heights

1630 mm, 1830 mm, 2140 mm



### 3 Shelf Widths

460 mm, 540 mm, 610 mm

#### • Post Kit includes:

2 stationary posts with leveling feet installed, 1 top post connector, 1 bottom post connector, 8 collar wedges in a bag and instructions. Post Kit ships disassembled.

#### Stationary Post Kits

CODE	WIDTH IN. (MM)	HEIGHT IN. (MM)	CASE KG. (CUBE M <sup>3</sup> )
<b>1630 mm Height</b>			
CBPK1864	460 mm	1630 mm	3,28 (0,01)
CBPK2164	540 mm	1630 mm	3,37 (0,01)
CBPK2464	610 mm	1630 mm	3,43 (0,01)
<b>1830 mm Height</b>			
CBPK1872	460 mm	1830 mm	3,64 (0,01)
CBPK2172	540 mm	1830 mm	3,73 (0,01)
CBPK2472	610 mm	1830 mm	3,80 (0,01)
<b>2140 mm Height</b>			
CBPK1884	460 mm	2140 mm	4,09 (0,02)
CBPK2184	540 mm	2140 mm	4,17 (0,02)
CBPK2484	610 mm	2140 mm	4,24 (0,02)

Case Pack: 1

Item No. \_\_\_\_\_

Specifier Identification No. \_\_\_\_\_

Model No. \_\_\_\_\_

Quantity \_\_\_\_\_

## Architect Specs

<b>Posts:</b>	Proprietary non-corrosive and rust free composite material.
<b>Post Connectors:</b>	Glass Filled Nylon.
<b>Traverses:</b>	Proprietary non-corrosive and rust free composite material.
<b>Vented Shelf Plates:</b>	Polypropylene.
<b>Corner Connectors:</b>	Glass Filled Nylon.
<b>Adjustable Foot:</b>	Glass Filled Nylon.
<b>Seismic Foot:</b>	Stainless steel post and wide foot plate, 3 holes for bolts. (Bolts not provided)
<b>Wall Fastener:</b>	Stainless Steel.
<b>Dovetails:</b>	Resin Nylon.
<b>Post Collar Wedges:</b>	Resin Polypropylene.
<b>Dunnage Stand Bracket:</b>	Resin Polypropylene.

## Optional Accessories

<b>Seismic Foot</b> (Bolts not provided)	<input type="checkbox"/> CSEQ3	<b>Color:</b> Silver	<b>Case pack:</b> 4 each
<b>Wall Fastener</b>	<input type="checkbox"/> CSWF	<b>Color:</b> Silver	<b>Case pack:</b> 4 each
<b>Identification Tag 15 cm</b>	<input type="checkbox"/> CBID6	<b>Color:</b> White/Clear	<b>Case pack:</b> 12 each

## Standard Color

Brushed Graphite (580)

## Approvals



Does not include Wall Fastener, Seismic Foot, Corner Connector and ID Tag.

COMPONENT

# CAMBRO®

CAMBRO U.S.A.  
TEL: (714) 848-1555  
FAX: (714) 230-4375  
international@cambro.com

CAMBRO EUROPEAN LOGISTICS  
TEL: (49) 7022 90 100 0  
FAX: (49) 7022 90100 19  
cambroeurope@cambro.com

CAMBRO NORTH IRELAND & UK  
TEL: 0800 587 0057 Toll Free  
FAX: 0845 280 3411  
cambrouk@cambro.com

CAMBRO IRELAND  
TEL: 1800 509 046 Toll Free  
FAX: 01 633 55 76  
cambroireland@cambro.com

© Copyright Cambro Manufacturing Company.

1071305

## Camshelving® Basics Series

### Single Shelf Kits for Stationary Units

#### 3 Shelf Widths

460 mm, 540 mm, 610 mm



#### 6 Shelf Lengths

760 mm, 910 mm, 1070 mm,  
1220 mm, 1380 mm, 1530 mm

#### • Shelf Kit includes:

Two Stationary Traverses, 8 Stationary Dovetails (4 ea. A & B),  
Vented Shelf Plates to complete one shelf.

### Features & Benefits

#### Strong Technology

Posts and Traverses are built using advanced manufacturing technology and the use of a non-corrosive and rust free composite material. The light-weight, yet extremely durable composite material in Camshelving® Basics Series endures even the toughest environments and supports all food safety, HACCP and sanitation recommendations. Shelves 760 to 910 mm long hold up to 300 Kg evenly distributed static weight. Shelves 1070 to 1220 mm long hold up to 250 Kg each and shelves 1380 to 1530 mm long hold up to 200 Kg each. Shelves connected by Corner Connectors hold up to 136 kg on a 760 to 1220 mm traverse.

#### Smart Design.

Similar to other shelving products by Cambro, shelf plates can be easily removed, washed individually or in sections and placed in an open-end Camrack® (OETR314) and washed in a commercial dishwasher.

#### Uncompromised Reliability.

Resistant to scratching, peeling, warping, rusting and corrosion every component in Camshelving® Basics was rigorously tested for strength, reliability and performance. Functions in temperatures down to -38° C or warm environments up to 88° C.

#### Exceptional Value.

Innovative design helps maximize valuable space and provides strength and stability. Straight line components are attached by sharing posts of existing units with no loss of weight-bearing capacity. Camshelving® Basics features a lifetime warranty against rust and corrosion eliminating the need for unnecessary replacement costs.

#### Requires Minimal Assembly.

Can be put together with the use of a rubber mallet. Two-piece dovetails secure Traverses so they can be set easily into place.

#### Flexible Design.

Shelves can be easily adjusted at 100 mm increments. Add a shelf to an existing unit by simply ordering the appropriate Shelf Kit. Adjustable foot on bottom of each stationary Post adjusts easily for floor irregularities so shelf contents are securely stored and leveled.

#### Optional Accessories.

Includes Corner Connectors and Identification Tag. Both clip easily onto traverses.

Item No. \_\_\_\_\_

Specifier Identification No. \_\_\_\_\_

Model No. \_\_\_\_\_

Quantity \_\_\_\_\_



Four Shelf Unit with Vented Shelf Plates.



Vented Shelf Kit includes two Traverses and Vented Shelf Plates for one shelf.

Camshelving Basics Components are Patent Pending.

### Approvals



Does not include Wall Fastener, Seismic Foot, Corner Connector and ID Tag.

COMPONENT

# Camshelving® Basics Series

## Single Shelf Kits for Stationary Units

### 3 Shelf Widths

460 mm, 540 mm, 610 mm



### 6 Shelf Lengths

760 mm, 910 mm, 1070 mm,  
1220 mm, 1380 mm, 1530 mm

### • Shelf Kit includes:

Two Stationary Traverses, 8 Stationary Dovetails (4 ea. A & B),  
Vented Shelf Plates to complete one shelf.

### Stationary – Shelf Kits with Vented Shelf Plates

CODE	WIDTH IN. MM	LENGTH IN. MM	CASE KG. (CUBE M <sup>3</sup> )
<b>760 mm Traverses</b>			
CBSK1830V	460 mm	760 mm	2,62 (0,03)
CBSK2130V	540 mm	760 mm	2,83 (0,03)
CBSK2430V	610 mm	760 mm	3,01 (0,03)
<b>910 mm Traverses</b>			
CBSK1836V	460 mm	910 mm	3,24 (0,04)
CBSK2136V	540 mm	910 mm	3,47 (0,04)
CBSK2436V	610 mm	910 mm	3,72 (0,04)
<b>1070 mm Traverses</b>			
CBSK1842V	460 mm	1070 mm	3,91 (0,06)
CBSK2142V	540 mm	1070 mm	4,15 (0,06)
CBSK2442V	610 mm	1070 mm	4,44 (0,06)
<b>1220 mm Traverses</b>			
CBSK1848V	460 mm	1220 mm	4,09 (0,04)
CBSK2148V	540 mm	1220 mm	4,39 (0,04)
CBSK2448V	610 mm	1220 mm	4,74 (0,04)
<b>1380 mm Traverses</b>			
CBSK1854V	460 mm	1380 mm	4,92 (0,07)
CBSK2154V	540 mm	1380 mm	5,20 (0,07)
CBSK2454V	610 mm	1380 mm	5,59 (0,07)
<b>1530 mm Traverses</b>			
CBSK1860V	460 mm	1530 mm	5,44 (0,08)
CBSK2160V	540 mm	1530 mm	5,85 (0,08)
CBSK2460V	610 mm	1530 mm	6,31 (0,08)

Case Pack: 1

### Architect Specs

<b>Posts:</b>	Proprietary non-corrosive and rust free composite material.
<b>Post Connectors:</b>	Glass Filled Nylon.
<b>Traverses:</b>	Proprietary non-corrosive and rust free composite material.
<b>Vented Shelf Plates:</b>	Polypropylene.
<b>Corner Connectors:</b>	Glass Filled Nylon.
<b>Adjustable Foot:</b>	Glass Filled Nylon.
<b>Seismic Foot:</b>	Stainless Steel post and wide foot plate, 3 holes for bolts. (Bolts not provided)
<b>Wall Fastener:</b>	Stainless Steel.
<b>Dovetails:</b>	Resin Nylon
<b>Post Collar Wedges:</b>	Resin Polypropylene

Item No. \_\_\_\_\_

Specifier Identification No. \_\_\_\_\_

Model No. \_\_\_\_\_

Quantity \_\_\_\_\_

### Corner Connector Set

CODE	DESCRIPTION	CASE KG. (CUBE M <sup>3</sup> )
CBBC	Right and Left	0,16 (0,001)

Case Pack: 1 set

### Identification Tag

CODE	DESCRIPTION
CBID6	ID Tag 15 cm

Case Pack: 12 each

### Standard Color

Brushed Graphite (580)

### Approvals



Does not include Wall Fastener, Seismic Foot, Corner Connector and ID Tag.

COMPONENT

# CAMBRO®

CAMBRO U.S.A.  
TEL: (714) 848-1555  
FAX: (714) 230-4375  
international@cambro.com

CAMBRO EUROPEAN LOGISTICS  
TEL: (49) 7022 90 100 0  
FAX: (49) 7022 90100 19  
cambroeurope@cambro.com

CAMBRO NORTH IRELAND & UK  
TEL: 0800 587 0057 Toll Free  
FAX: 0845 280 3411  
cambrouk@cambro.com

CAMBRO IRELAND  
TEL: 1800 509 046 Toll Free  
FAX: 01 633 55 76  
cambroireland@cambro.com

© Copyright Cambro Manufacturing Company.

1071305

## Camshelving® Basics Series

### 4-Shelf Stationary Starter Units

#### 1 Post Height

1830 mm



#### 3 Shelf Widths

460 mm, 540 mm, 610 mm

#### 5 Shelf Lengths

910 mm, 1070 mm, 1220 mm,  
1380 mm, 1530 mm

#### • Starter Unit includes:

4 stationary posts with leveling feet installed pre-assembled with post connectors and collar wedges, 4 bags of 8 each stationary traverse dovetails (4 ea. A and B), Vented shelf plates (for 4 shelves), 8 stationary traverses and instructions.

### Features & Benefits

#### Strong Technology

Posts and Traverses are built using advanced manufacturing technology and the use of a non-corrosive and rust free composite material. The light-weight, yet extremely durable composite material in Camshelving® Basics Series endures even the toughest environments and supports all food safety, HACCP and sanitation recommendations. Shelves 760 to 910 mm long hold up to 300 Kg evenly distributed static weight. Shelves 1070 to 1220 mm long hold up to 250 Kg each and shelves 1380 to 1530 mm long hold up to 200 Kg each. Shelves connected by Corner Connectors hold up to 136 kg on a 760 to 1220 mm traverse.

#### Smart Design.

Similar to other shelving products by Cambro, shelf plates can be easily removed, washed individually or in sections and placed in an open-end Camrack® (OETR314) and washed in a commercial dishwasher.

#### Uncompromised Reliability.

Resistant to scratching, peeling, warping, rusting and corrosion every component in Camshelving® Basics was rigorously tested for strength, reliability and performance. Functions in temperatures down to -38°C or warm environments up to 88°C.

#### Exceptional Value.

Innovative design helps maximize valuable space and provides strength and stability. Straight line components are attached by sharing posts of existing units with no loss of weight-bearing capacity. Camshelving® Basics features a lifetime warranty against rust and corrosion eliminating the need for unnecessary replacement costs.

#### Requires Minimal Assembly.

Can be put together with the use of a rubber mallet. Two-piece dovetails secure Traverses so they can be set easily into place.

#### Flexible Design.

Shelves can be easily adjusted at 100 mm increments. Add a shelf to an existing unit by simply ordering the appropriate Shelf Kit. Adjustable foot on bottom of each stationary Post adjusts easily for floor irregularities so shelf contents are securely stored and leveled.

#### Optional Accessories.

Includes Wall Fastener, Seismic Foot and Identification Tag for shelves. Identification Tag clips easily onto traverses.

Item No. \_\_\_\_\_

Specifier Identification No. \_\_\_\_\_

Model No. \_\_\_\_\_

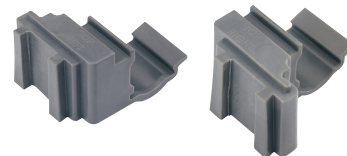
Quantity \_\_\_\_\_



Four Shelf Unit with Vented Shelf Plates.



Dunnage Stand Recommended for Units 1380 mm or longer.



Set of Left and Right Corner Connectors (1 set required per shelf).

### Approvals



Does not include Wall Fastener, Seismic Foot, Corner Connector and ID Tag.

COMPONENT

Camshelving Basics Components are Patent Pending.

# Camshelving® Basics Series

## 4-Shelf Stationary Starter Units

**1 Post Height**  
1830 mm



**3 Shelf Widths**  
460 mm, 540 mm, 610 mm

**5 Shelf Lengths**  
910 mm, 1070 mm, 1220 mm,  
1380 mm, 1530 mm

• **Starter Unit includes:**

4 stationary posts with leveling feet installed pre-assembled with post connectors and collar wedges, 4 bags of 8 each stationary traverse dovetails (4 ea. A and B), Vented shelf plates (for 4 shelves), 8 stationary traverses and instructions.

### Four Shelf Starter Units 1830 mm Height

CODE	TRAVERSE IN. MM	CASE KG. (CUBE M³)
<b>460 mm Width</b>		
CBU183672	910 mm	18,55 (0,17)
CBU184272	1070 mm	20,01 (0,17)
CBU184872	1220 mm	21,61 (0,17)
CBU185472	1380 mm	23,19 (0,17)
CBU186072	1530 mm	24,68 (0,17)
<b>540 mm Width</b>		
CBU213672	910 mm	20,18 (0,21)
CBU214272	1070 mm	21,87 (0,21)
CBU214872	1220 mm	23,61 (0,21)
CBU215472	1380 mm	25,40 (0,21)
CBU216072	1530 mm	27,04 (0,21)
<b>610 mm Width</b>		
CBU243672	910 mm	21,98 (0,24)
CBU244272	1070 mm	23,99 (0,24)
CBU244872	1220 mm	25,63 (0,24)
CBU245472	1380 mm	27,60 (0,24)
CBU246072	1530 mm	29,55 (0,24)

Case Pack: 1

### Architect Specs

**Posts:** Proprietary non-corrosive and rust free composite material.  
**Post Connectors:** Glass Filled Nylon.  
**Traverses:** Proprietary non-corrosive and rust free composite material.  
**Vented/Shelf Plates:** Polypropylene.  
**Corner Connectors:** Glass Filled Nylon.  
**Adjustable Foot:** Glass Filled Nylon.  
**Seismic Foot:** Stainless Steel post and wide foot plate, 3 holes for bolts. (Bolts not provided)  
**Wall Fastener:** Stainless Steel.  
**Dovetails:** Resin Nylon.  
**Post Collar Wedges:** Resin Polypropylene.  
**Dunnage Stand Bracket:** Resin Polypropylene.

Item No. \_\_\_\_\_

Specifier Identification No. \_\_\_\_\_

Model No. \_\_\_\_\_

Quantity \_\_\_\_\_

### Corner Connector Set

CODE	DESCRIPTION	CASE KG. (CUBE M³)
CBCC	Right and Left	0,16 (0,001)

Case Pack: 1 set

### Dunnage Stands

165 mm Height		
CODE	WIDTH IN. MM	CASE KG. (CUBE M³)
CBDS18	460 mm	0,87 (0,01)
CBDS21	540 mm	0,92 (0,01)
CBDS24	610 mm	0,95 (0,01)

Case Pack: 1

### Optional Accessories

**Seismic Foot** (Bolts not provided)  CSEQ3 **Color:** Silver **Case pack:** 4 each  
**Wall Fastener**  CSWF **Color:** Silver **Case pack:** 4 each  
**Identification Tag 15 cm**  CBID6 **Color:** White/Clear **Case pack:** 12 each

### Standard Color

Brushed Graphite (580)

### Approvals



Does not include Wall Fastener, Seismic Foot, Corner Connector and ID Tag.

COMPONENT



CAMBRO U.S.A.  
 TEL: (714) 848-1555  
 FAX: (714) 230-4375  
 international@cambro.com

CAMBRO EUROPEAN LOGISTICS  
 TEL: (49) 7022 90 100 0  
 FAX: (49) 7022 90100 19  
 cambroeuropa@cambro.com

CAMBRO NORTH IRELAND & UK  
 TEL: 0800 587 0057 Toll Free  
 FAX: 0845 280 3411  
 cambrouk@cambro.com

CAMBRO IRELAND  
 TEL: 1800 509 046 Toll Free  
 FAX: 01 633 55 76  
 cambroireland@cambro.com

© Copyright Cambro Manufacturing Company.

## Camshelving® Basics Series

### 4-Shelf Stationary Add-On Unit

**1 Post Height**

1830 mm

**1 Shelf Width**

610 mm

**1 Shelf Length**

1220 mm



**• Add-On Unit includes:**

2 stationary posts with leveling feet installed – pre-assembled with post connectors and collar wedges, 4 bags of 8 each stationary traverse dovetails (4 ea. A and B), vented shelf plates (for 4 shelves), 8 stationary traverses and instructions.

### Features & Benefits

**Strong Technology**

Posts and Traverses are built using advanced manufacturing technology and the use of a non-corrosive and rust free composite material. The light-weight, yet extremely durable composite material in Camshelving® Basics Series endures even the toughest environments and supports all food safety, HACCP and sanitation recommendations. Shelves 760 to 910 mm long hold up to 300 Kg evenly distributed static weight. Shelves 1070 to 1220 mm long hold up to 250 Kg each and shelves 1380 to 1530 mm long hold up to 200 Kg each. Shelves connected by Corner Connectors hold up to 136 kg on a 760 to 1220 mm traverse.

**Smart Design.**

Similar to other shelving products by Cambro, shelf plates can be easily removed, washed individually or in sections and placed in an open-end Camrack® (OETR314) and washed in a commercial dishwasher.

**Uncompromised Reliability.**

Resistant to scratching, peeling, warping, rusting and corrosion every component in Camshelving® Basics was rigorously tested for strength, reliability and performance. Functions in temperatures down to -38° C or warm environments up to 88° C.

**Exceptional Value.**

Innovative design helps maximize valuable space and provides strength and stability. Straight line components are attached by sharing posts of existing units with no loss of weight-bearing capacity. Camshelving® Basics features a lifetime warranty against rust and corrosion eliminating the need for unnecessary replacement costs.

**Requires Minimal Assembly.**

Can be put together with the use of a rubber mallet. Two-piece dovetails secure traverses so they can be set easily into place.

**Flexible Design.**

Shelves can be easily adjusted at 100 mm increments. Add a shelf to an existing unit by simply ordering the appropriate Shelf Kit. Adjustable foot on bottom of each stationary post adjusts easily for floor irregularities so shelf contents are securely stored and leveled.

**Optional Accessories.**

Include Wall Fastener, Seismic Foot and Identification Tag for shelves. Identification Tag clips easily onto traverses.

Item No. \_\_\_\_\_

Specifier Identification No. \_\_\_\_\_

Model No. \_\_\_\_\_

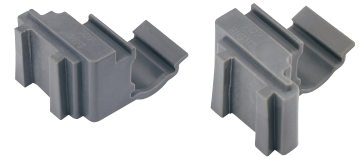
Quantity \_\_\_\_\_



Four Shelf Add-On Unit consists of one Post Kit and four Vented Shelf Kits.



Dunnage Stand Recommended for Units 1380 mm or longer.



Set of Left and Right Corner Connectors (1 set required per shelf).

### Approvals



Does not include Wall Fastener, Seismic Foot, Corner Connector and ID Tag.

COMPONENT

Camshelving Basics Components are Patent Pending.

# Camshelving® Basics Series

## 4-Shelf Stationary Add-On Unit

### 1 Post Height

1830 mm

### 1 Shelf Width

610 mm

### 1 Shelf Length

1220 mm



### • Add-On Unit includes:

2 stationary posts with leveling feet installed – pre-assembled with post connectors and collar wedges, 4 bags of 8 each stationary traverse dovetails (4 ea. A and B), vented shelf plates (for 4 shelves), 8 stationary traverses and instructions.

### Four Shelf Add-On Unit 1830 mm Height

CODE	TRAVERSE IN. MM	CASE KG. (CUBE M <sup>3</sup> )
610 mm Width		
CBA244872	1220 mm	22,52 (0,24)

Case Pack: 1

### Corner Connector Set

CODE	DESCRIPTION	CASE KG. (CUBE M <sup>3</sup> )
CBCC	Right and Left	0,16 (0,00)

Case Pack: 1 set

### Dunnage Stands

#### 165 mm Height

CODE	WIDTH IN. MM	CASE KG. (CUBE M <sup>3</sup> )
CBDS18	460 mm	0,87 (0,01)
CBDS21	540 mm	0,92 (0,01)
CBDS24	610 mm	0,95 (0,01)

Case Pack: 1

### Architect Specs

<b>Posts:</b>	Proprietary non-corrosive and rust free composite material.
<b>Post Connectors:</b>	Glass Filled Nylon.
<b>Traverses:</b>	Proprietary non-corrosive and rust free composite material.
<b>Vented Shelf Plates:</b>	Polypropylene.
<b>Corner Connectors:</b>	Glass Filled Nylon.
<b>Adjustable Foot:</b>	Glass Filled Nylon.
<b>Seismic Foot:</b>	Stainless Steel post and wide foot plate, 3 holes for bolts. (Bolts not provided)
<b>Wall Fastener:</b>	Stainless Steel.
<b>Dovetails:</b>	Resin Nylon.
<b>Post Collar Wedges:</b>	Resin Polypropylene.
<b>Dunnage Stand Bracket:</b>	Resin Polypropylene.

Item No. \_\_\_\_\_

Specifier Identification No. \_\_\_\_\_

Model No. \_\_\_\_\_

Quantity \_\_\_\_\_

### Optional Accessories

<b>Seismic Foot</b> (Bolts not provided)	<input type="checkbox"/> CSEQ3	<b>Color:</b> Silver	<b>Case pack:</b> 4 each
<b>Wall Fastener</b>	<input type="checkbox"/> CSWF	<b>Color:</b> Silver	<b>Case pack:</b> 4 each
<b>Identification Tag 15cm</b>	<input type="checkbox"/> CBID6	<b>Color:</b> White/Clear	<b>Case pack:</b> 12 each

### Standard Color

Brushed Graphite (580)

### Approvals



Does not include Wall Fastener, Seismic Foot, Corner Connector and ID Tag.

COMPONENT

# CAMBRO®

CAMBRO U.S.A.  
TEL: (714) 848-1555  
FAX: (714) 230-4375  
international@cambro.com

CAMBRO EUROPEAN LOGISTICS  
TEL: (49) 7022 90 100 0  
FAX: (49) 7022 90100 19  
cambroeurope@cambro.com

CAMBRO NORTH IRELAND & UK  
TEL: 0800 587 0057 Toll Free  
FAX: 0845 280 3411  
cambrouk@cambro.com

CAMBRO IRELAND  
TEL: 1800 509 046 Toll Free  
FAX: 01 633 55 76  
cambroireland@cambro.com

© Copyright Cambro Manufacturing Company.

1071305